

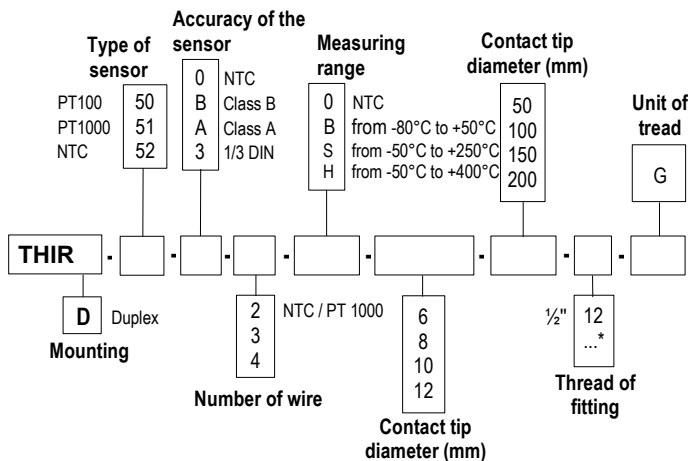


**RTD sensor
with DIN 43650 head and
resistive element
THIR 50 / THIRD 50**

- Temperature sensor with or without compression fitting and stainless steel contact tip.
- Measuring range (According to references) **from -80°C to +400°C** (PT100 and PT1000).
from -20°C to +120°C (NTC)
- Mounting of wire : **single pair** (2,3 or 4 wires).
multipair (2x2 wires only).
- For other type of resistance PT25, PT50, PT500, PT200 or NI, please contact us.

Part numbers

To order, just add the codes to complete the part number.



* Other dimensions on request

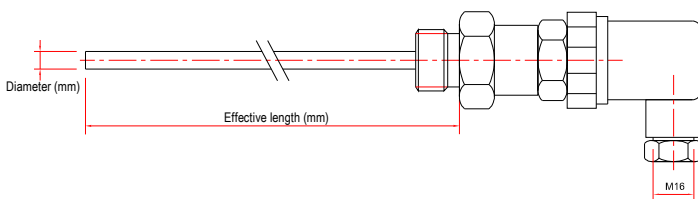
Example : THIR-50-B-3-S-6-100-12G.

Model : PT 100 temperature sensor, class B, 3 wires with 6 mm diameter and length including thread of 100 mm.

With 1/2" G compression fitting.

Standard measuring range from -50°C to 250°C.

Dimensions



Technical features

Working temperature.....from -80°C to +400°C (PT100 and PT1000)
(According to reference) from -20°C to +120°C (NTC)

Accuracy.....PT100 or PT1000 : See "Tolerances" table
NTC : See "Tolerances" table

Type of sensor.....PT100 or PT1000 : Class B, Class A,
1/3 DIN as per DIN IEC751
NTC : resistance à 25°C, R₂₅ = 10KΩ
Nominal Beta B25/85 value = 3,695K ±1%

Mounting of wire.....single pair 2, 3 or 4 wires
For T>250°C do not use 4 wires in a sheath of 6mm Ø.
multipair 4 wires only
For T>250°C use sheath from 8 mm Ø.



Storage temperature.....from -20°C to +80°C

Contact tip.....316 L stainless steel, no welding, 3/4 to 4/4 hard

Compression fitting.....stainless steel 316 L

Thread.....with or without, 1/2" G in standard
other on request

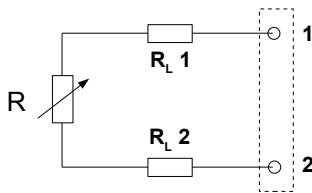
Electrical connection.....Attached tinned brass eyelet on flange

Connection head.....rectangular in glass fibre reinforced plastic
cable gland : P G11 or M16
IP65 protection (with seal)
working temperature : from -40°C to +125°C

Adjustable mountings.....on request

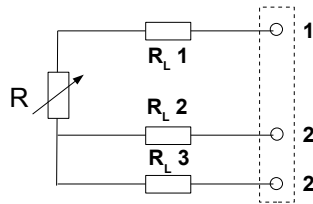
Useful information on thermometry with platinum resistor PT100, PT1000 or NTC .

• 2-wire connection



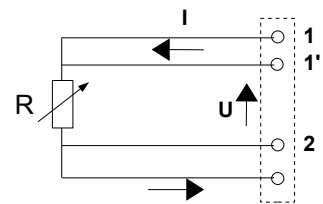
This is the simplest way, but line resistors (RL1 and RL2) are connected to the sensor in a series circuit. The addition of RL1 + RL2, leads to an off-set between measured temperature and real temperature. This connection must be avoided.

• 3-wire connection



This connection involves identical line resistors (RL1-RL2-RL3), RL2 + RL3 allow you to measure the line resistance that will be subtracted from the measured resistance between 1 and 2' terminals. This is the most common connection.

• 4-wire connection



Regulated current is going through 11' and 22' terminals and the measurement is made at the sensor terminals, so none of the line resistors are taken into account. This is the most accurate connection.

Tolerance* of PT100 and PT1000 probes.

Norms as per IEC 751 (1993), BS 1904 (1984) et DIN 43760 (1980).

Temp °C	Tolerances					
	Class B		Class A		1/3 DIN	
	± °C	± Ohms	± °C	± Ohms	± °C	± Ohms
-100	0.8	0.32	0.35	0.14	0.27	0.11
-50	0.55	0.22	0.25	0.1	0.19	0.08
0	0.3	0.12	0.15	0.06	0.1	0.04
100	0.8	0.3	0.35	0.13	0.27	0.1
200	1.3	0.48	0.55	0.2	0.44	0.16
300	1.8	0.64	0.75	0.27	0.6	0.21
400	2.3	0.79	0.95	0.33	0.77	0.26

*Resistance values for PT1000 (Ω) must be multiplied by 10 for the same corresponding temperature value (°C). I.e : at 0°C for Class B PT1000 ± 0.3°C → ± 1.2 Ω

Tolerances* of NTC probes

Measuring range °C	Tolerances °C
from -20°C to 0°C	± 0,5°C
from 0°C to +70°C	± 0,2 °C
from +70°C to +100°C	± 0,5 °C

*all accuracies indicated in this technical data sheet were stated in laboratory conditions, and can be guaranteed for measurements carried out in the same conditions, or carried out with calibration compensation.

Accessories (See data sheet)

- Transmitter output 4/20 mA or 0/10V
- Wall fixing support
- Stainless steel mounting bracket
- ¼" or ½" Gas screw nut
- Stainless steel compression fitting
- Teflon or stainless steel ferrule for compression fittings



- Sleeve to weld for food industry
- Stainless steel union fitting
- ½" Gas or NPT thread cuff
- Thermo-conducting silicone grease
- Calibration certificate
- Thermowell



Händlerkontakt:



MDUA GmbH & Co. KG · Mess- und Datentechnik für Umweltschutz und Arbeitssicherheit
Otto-Hahn-Str. 43 · 48161 Münster · Tel.: 02534 / 9775806 · Fax: 02534 / 9775807 · mail@mdua.de · www.mdua.de